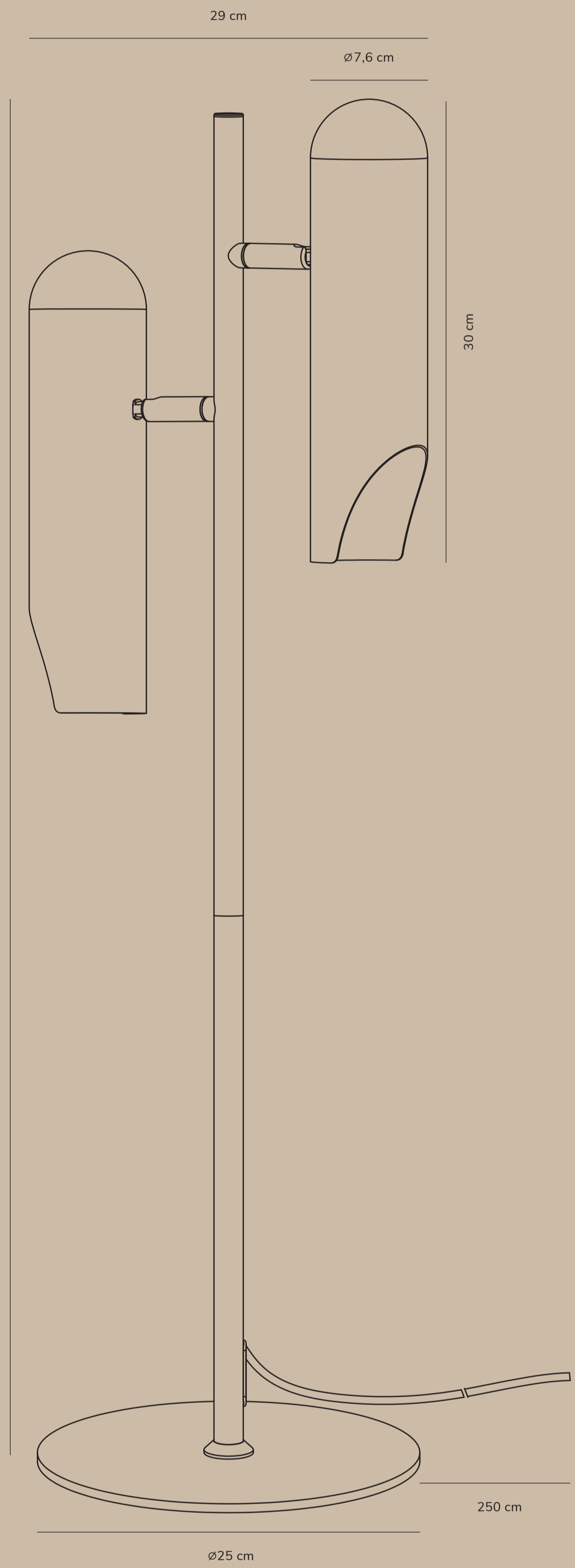
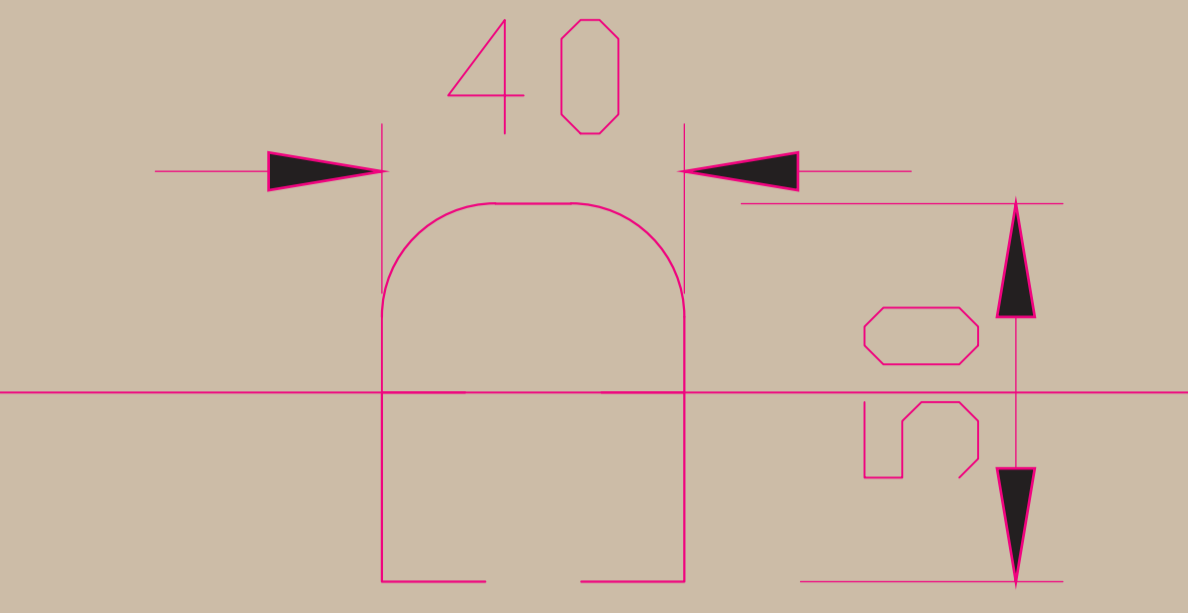
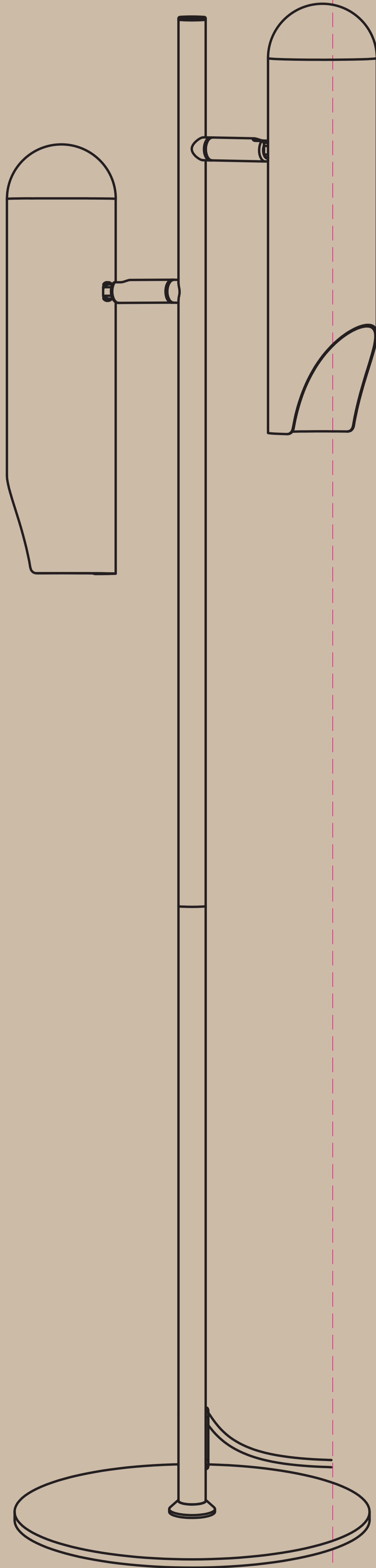


ROCHELLE
by Charlotte Hancke

ROCHELLE
by Charlotte Hancke

ROCHELLE
by Charlotte Hancke



Charlotte Hancke has always had a great passion for design and knew from a very early age that she wanted to pursue a career in design or architecture. In 2002 she graduated from Aarhus School of Architecture in Industrial Design, and a few years later she chose to become self-employed working with design full time.

Charlotte Hancke

Charlotte Hancke



Hersteller
1918 22, Østergade København
1206 København K
44014412002 XY



ROCHELLE

by Charlotte Hancke

Item number 2320314003
Color Black
Material Metal, Plastic
IP Class IP20-for indoor use, Class II
Voltage 220-240V-50/60Hz
Cable Textile cable: Black 250 cm non replaceable
Switch On the cable
Light source 2xGU10, Max. 15W, Excl. light source

www.dftpglobal.com

5970492440154271

NET WEIGHT COLOR BOX (KG)	0,95
NET WEIGHT COLOR BOX (LBS)	2,1
NET WEIGHT COLOR BOX (LBS)	2,1
NET WEIGHT COLOR BOX (LBS)	2,1